

## Unity Desktop Client – Quick Start User Guide

---

### Step 1

Install Unity from the accompanying installation file

### Step 2

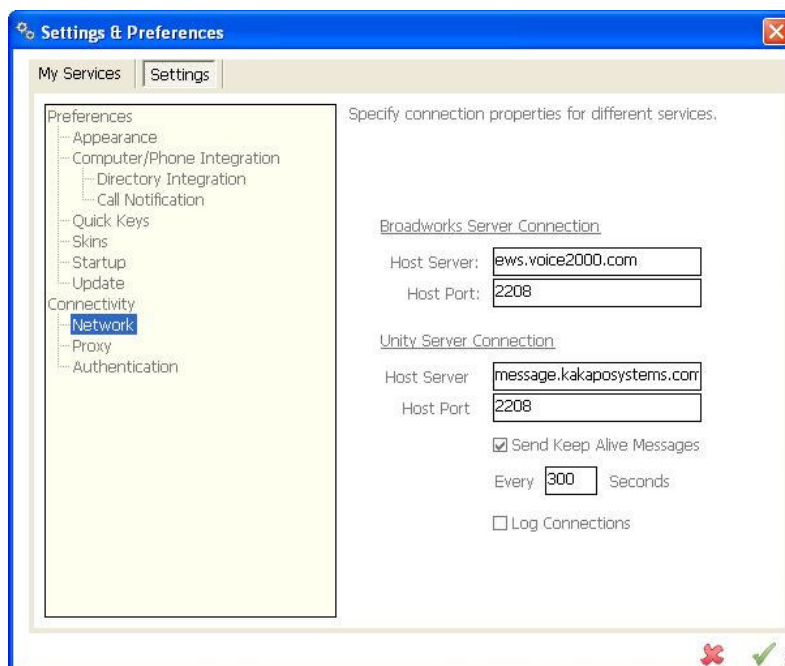
When starting Unity for the first time you will receive the following message:



Click OK

### Step 3

Enter the Service Provider BroadWorks® server address and port number

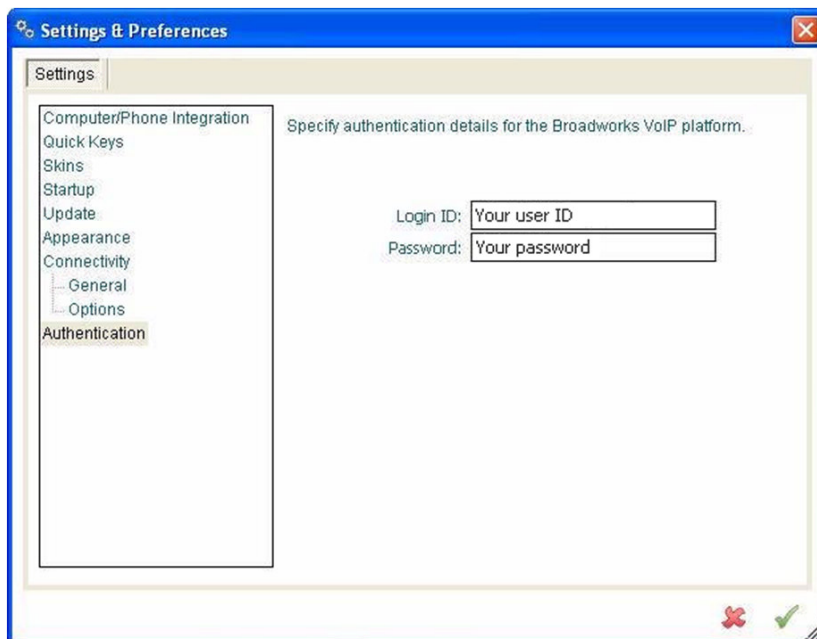




#### Step 4

Click Authentication in the left window

Enter your BroadWorks Username and Password. These are the same login credentials you would use to access the BroadWorks® CommPilot web portal.



#### Step 5

Click the green tick at bottom right. Unity will now login to BroadWorks®

Full Help is available from Help | Contents in Unity